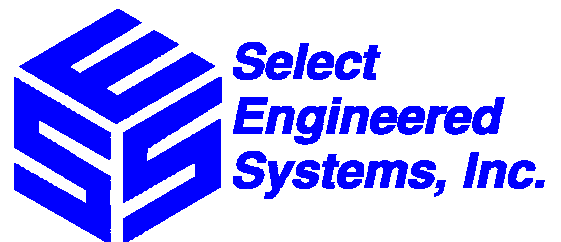


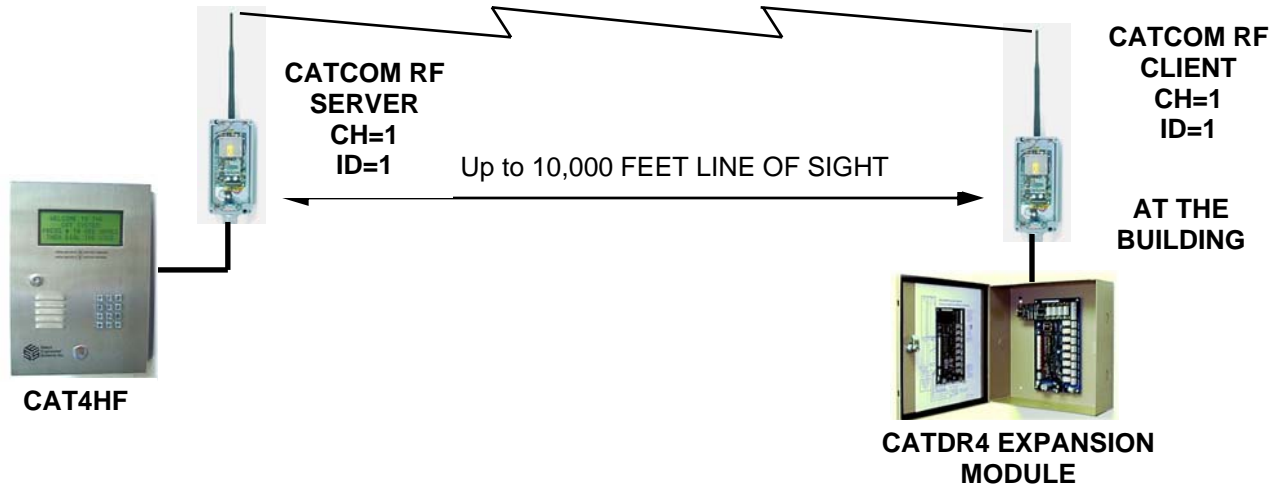
CAT COM RF INSTALLER MANUAL



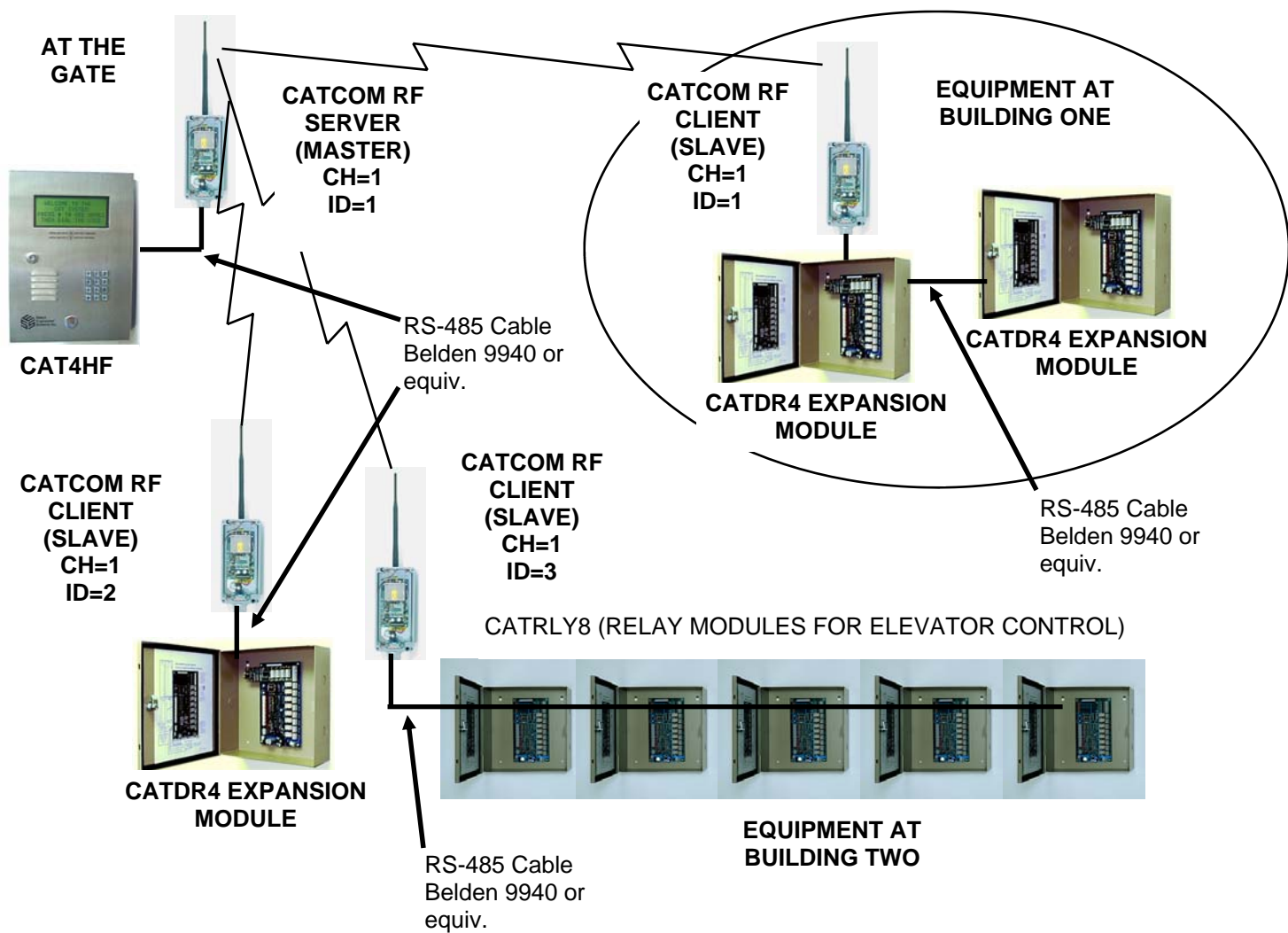


Installing the CAT COM RF

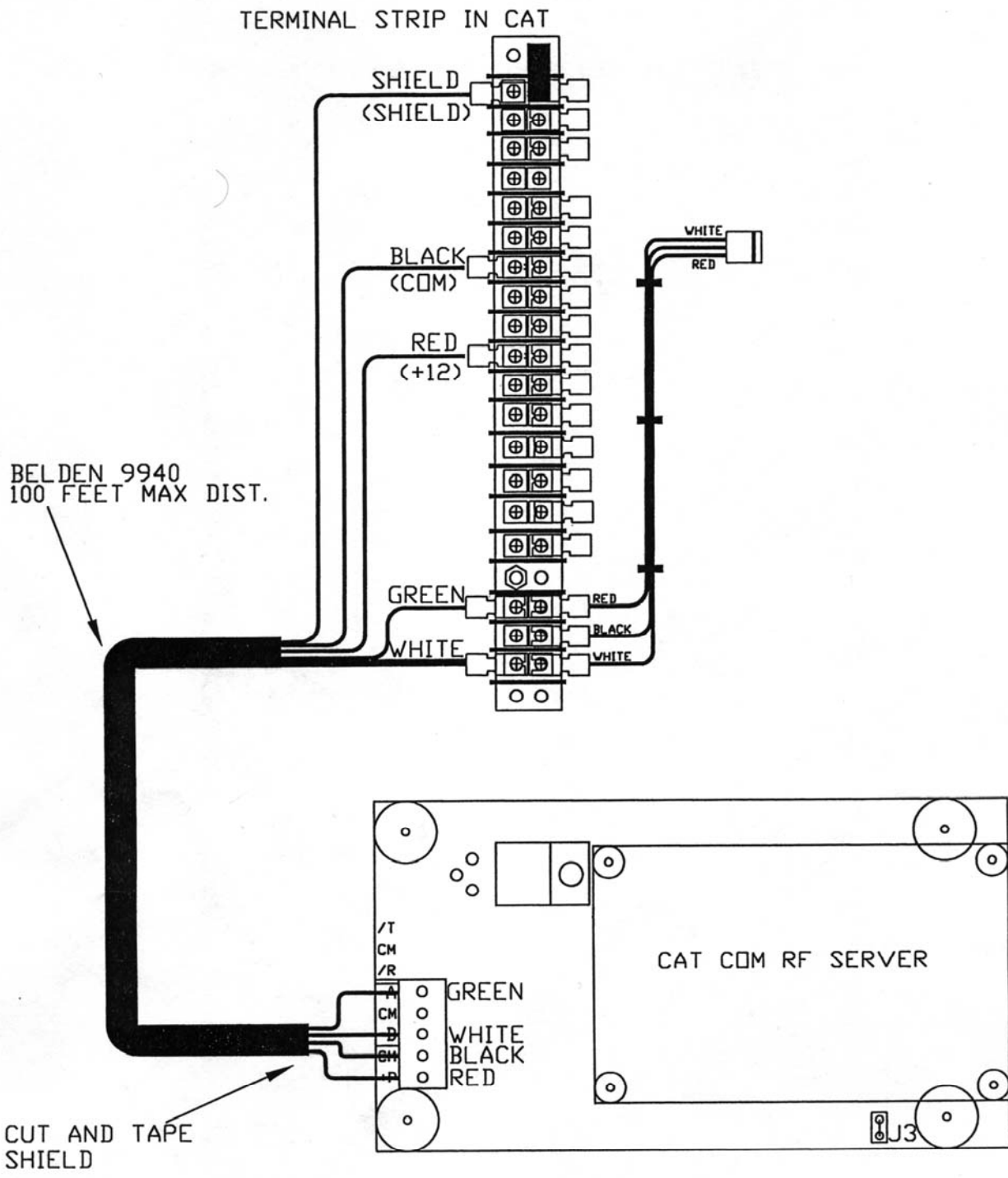
INTRODUCTION: The CAT COM RF system consists of two wireless communicators. They essentially replace the Belden #8771 3-conductor twisted, shielded, jacketed, cable that would normally provide RS-485 communication from a CAT to a CAT DR-4, or a CAT RLY-8. The CAT COM RF Server connects **ONLY** to CAT control units. The CATCOM RF Client connects **ONLY** to CAT DR-4s or CAT RLY-8s. They are labeled on the bottom of the housing and inside the cover as either a Server or a Client.



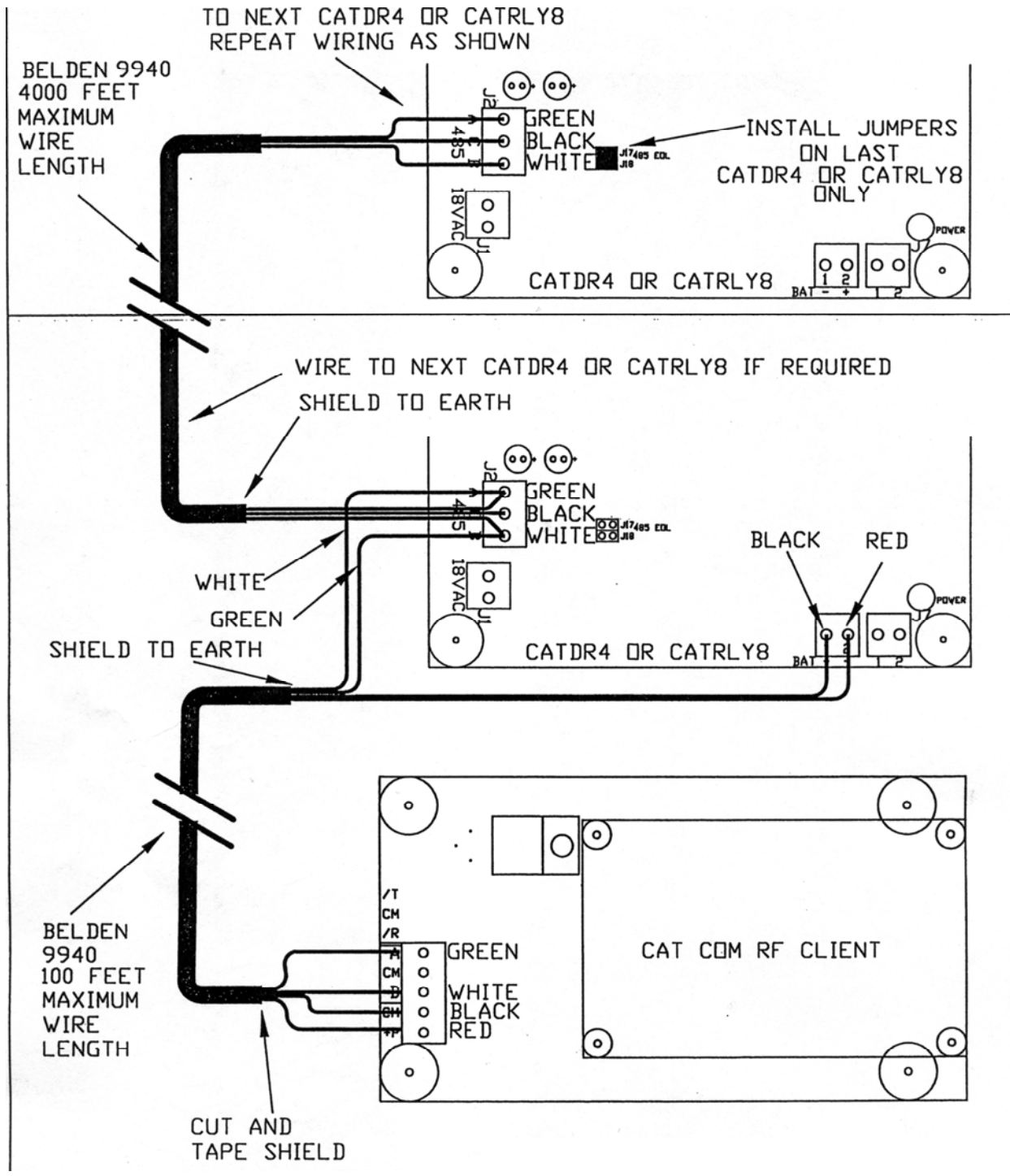
CAT COM RF Servers are defined by a channel number 1—64 (factory set; not field changeable) and by an ID device number 1—64 (also factory set and not changeable). CAT COM RF Clients are identified in the same manner with a channel number and ID number. These numbers **MUST** have the same channel number. The ID numbers are used to distinguish the different CAT COM RF clients that may be communicating with a CAT COM RF Server on a specific channel.



The above example shows a CAT COM RF Server (Master) talking to three clients (Slaves) at two buildings on a single property.



CAT COM RF Server Wiring Hookup Diagram

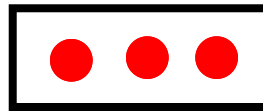


CAT COM RF Client Wiring Hookup Diagram



IR = In Range
TX = Transmit
RX = Receive

IR TX RX



Server: (Master)
IR = Off
TX = Blinking
RX = Blinking

Client: (Slave)
IR = On
TX = Blinking
RX = Blinking

Normal LED State

When operating normally, the CAT COM RF LEDs will have continuous communications and the transmit and receive LEDs will be blinking on and off at both the server and the client(s). The In Range LED will be on, ONLY on the client side. If the IR LED is off, then the client is either not powered up, not in range of the server, has an obstructed signal, or requires servicing. A TX or RX LED missing from either the Server or the client indicates a problem that may require servicing. The most frequent cause of communications failure is due to field mis-wiring. Re-check all connections before requesting further service.

This page left intentionally blank.

“BETTER TECHNOLOGY MAKES BETTER SYSTEMS”

Last Printing Date

05/06



Select Engineered Systems, Inc.

7991 West 26th Ave.

Hialeah, FL 33016

Toll Free: 1-800-342-5737

In FL: 305-823-5410

Fax: 305-823-5215

www.selectses.com