

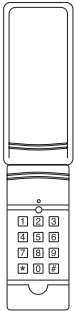


Dolphin Wireless Garage Door Keypad Dual Frequency 315/390 MHz

Keypad Instructions

Product # DOLGDO315390

1. INTRODUCTION



Thank you for your purchase of the Transmitter Solutions Dolphin wireless keypad. The DOLGDO315390 will accommodate one 4 digit PIN to activate a signal transmission.

Package contains:

- Keypad
- 9 volt battery
- 2 screws + wall anchors
- Keypad instructions

Please follow the detailed instructions below in order to set up the Dolphin keypad to operate with your garage door opener or receiver.

2. OPERATIONAL FEATURES

- Pressing any key illuminates the keypad for 5 seconds.
- A "buzzer" indicates each button depression.
- After 20 incorrect key entries, the keypad will "lock up" for 40 seconds.
- If the battery is low the single LED flashes rapidly for 5 seconds, indicating it is time to replace the battery.
- After you have entered a valid code, the keypad LED will flash during the 5 second "time out" period. During the "time out" period you may press any key and the keypad will send another signal to your receiver each time you press a key.
- The * key resets your entry. If you make a mistake while entering your PIN, pressing the * key resets your entry so you can start over.

HINT: If you always begin your PIN with the * you will reduce the likelihood of faulty operation

3. PROGRAMMING YOUR NEW KEYPAD

1. SET FREQUENCY SWITCH

- a. Remove the access door on the top back of the keypad by sliding the door in the direction of the arrow. (see Figure 1)
- b. Locate the frequency switches on the top of the electronic board located inside of the access door. (see Figure 2)

3. SET FREQUENCY JUMPER

- a. Determine the operating frequency you will use on your keypad installation. This keypad can operate at either 315 MHz or 390 MHz. At 315 MHz the keypad is compatible with all 315 MHz receivers with 9 dip switches. At 390 MHz the keypad is compatible all 390 MHz receivers with 9 dip switches. (see S2 on Figure 3)

Figure 1

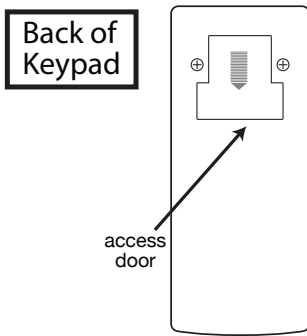
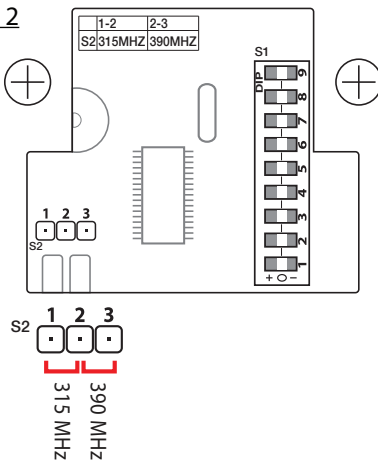


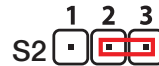
Figure 3



Figure 2



390 MHz

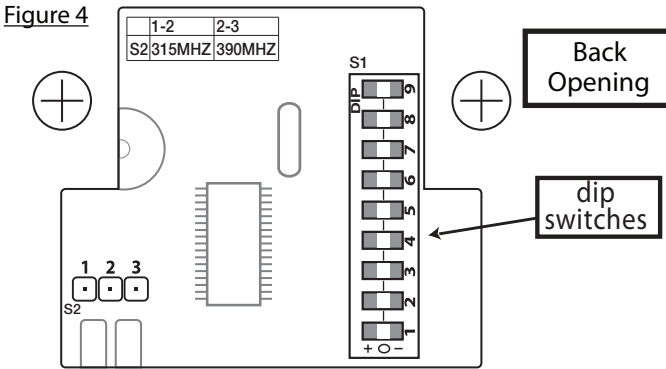


3. PROGRAMING YOUR NEW KEYPAD (cont.)

4. SET DIP SWITCHES

- Set the DIP switches of the keypad to match the DIP switch settings of the receiver, or a functioning transmitter. (see Figure 4)
- Enter * then the 4 digit PIN on the keypad, and then press # to activate the receiver. If you just purchased the keypad, the factory default 4-digit PIN is 1234. So please enter *1-2-3-4 #. If the receiver does not operate, reverse the keypad DIP switches, and re-enter * 1-2-3-4 #.

TIP: When you enter the correct code followed by #, the keypad LEDs flash slowly for 5 seconds. If you enter an incorrect code, the keypad LED will glow steady for 5 seconds.



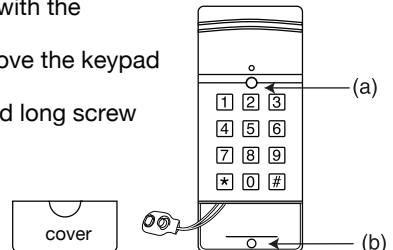
- c. To change the 4 digit PIN (example)
- | | | | | |
|---|---|-----------|------------------------------|-------------------------|
| # | # | 1-2-3-4 | 1-3-5-7 | # |
| | | (Old Pin) | followed within 5 seconds by | (New PIN) |
| | | | | pin must be four digits |

TIP: When you have entered the programming mode of # # the small LED glows a steady red. When you complete the change of the PIN the small LED flashes twice quickly.

To reset the keypad to the factory default code, remove the 9 volt battery and depress and hold any key on the keypad, then reinstall the battery. Continue holding the key down for 5 seconds and then release the key. The keypad is now reset to the factory defaults.

4. INSTALLATION

- Position the keypad on the garage door frame with the provided screws.
- Lift up the cover and insert the long screw above the keypad in the slot provided (a).
- Remove the battery cover and insert the second long screw in the lower slot (b).
- Replace the battery cover.



5. WARNING

If this transmitter triggers other doors in your neighborhood, change all your transmitters and receivers to a new code setting.

DO NOT let children use the keypad without adult supervision. Children can injure themselves, or others, if left unsupervised. Make sure all the required safety devices are installed before operating any door.

6. FCC

The keypad is approved by the FCC and it complies with Part 15 of the FCC Rules. Its operation is subject to the following 2 conditions:

1. This device may not cause harmful interference.
2. The device must accept any interference that may cause undesired operation.

WARNING:

Changes or modifications to this unit not expressly approved by the party responsible for compliance could void the user's authority to operate the equipment.

FCC ID: SU7DOLGDO315390

7. WARRANTY

The warranty period of this product is 24 months, beginning from the manufacturing date. During this period, if the product does not operate correctly, due to a defective component, the product will be repaired or replaced at the sole discretion of Transmitter Solutions. This warranty does not extend to the product casing which can be damaged by conditions outside of the control of Transmitter Solutions.



7380 S. Eastern Avenue, Suite 124-320 • Las Vegas, NV 89123
(866) 975-0101 * (866) 975-0404 Fax
www.transmittersolutions.com

*Other Dolphin wireless garage door keypads by Transmitter Solutions:
DOLGDO300310 - 300/310 MHz 8/10 dip switch
DOLGDO433RC - 433 MHz 4 channel, long range, rolling code*