

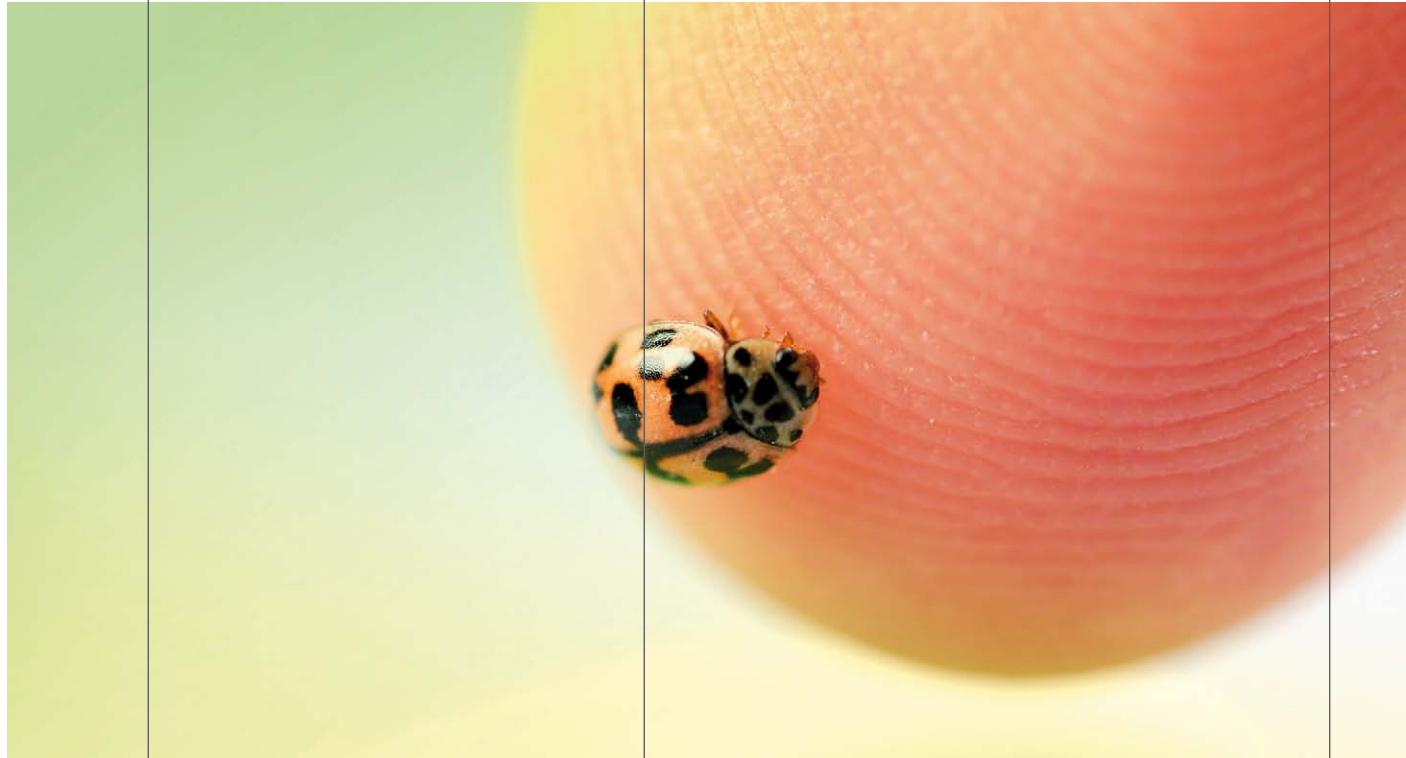


access units
MOTION 868 MHz range

Applicable to doors
roller · folding · sliding · swing · sectional
guillotine · revolving · barriers

GOBio

868 MHz transmitter with
biometric activation.



jcmtechnologies
be a step ahead with technology and imagination

JCM 's new biometric transmitter has
been designed to offer users not only the
maximum security level but a trustable
and comfortable device.

Up to 10 finger-prints can be
programmed in the transmitter allowing
to operate any device when passing the
finger through the reader.





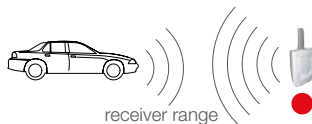
Versatility

- 2 user levels, Master and basic.
Master: user who can configure (learn and delete fingerprints) and use the transmitter
Basic: user who can only use the transmitter.

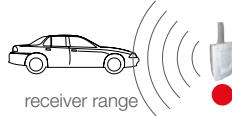
Great reliability and feeling of higher range for users

- With the APS (Approaching System) transmission system, the transmitter button can be pressed even outside the receiver range. The transmitter will repeatedly send the signal while the user approaches his garage door and until the door opens.

1 The user activates the transmitter outside the range.



2 Within 15 seconds he/she enters the range. The door remains closed.



3 The receiver receives the signal automatically without re-activating the transmitter and opens the door.



Great security

- New "high security" rolling code system with more keying bits.
- Maximum security thanks to JCM's experience combined with the last generation of Biometric's technology. Only programmed finger prints can use the transmitter.



Simplified community installation management

The following is available with the ASSISTANT programming tool:

- Database with all equipment, transmitters and proximity cards/tags provided in each installation.
- Possibility of assigning standby codes. Functional transmitters, cards and tags can be sold without having to visit the installation.
- Stolen or lost transmitters, cards and tags can be replaced by new, functional ones without having to visit the installation.
- Registrations via PIN, 1 4-digit code can be allocated to a receiver and all transmitters/proximity elements must have the same PIN to be programmed in the equipment. 2 PIN codes per transmitter is permitted. Also available with the PROGMAN portable programming tool.
- Possibility of personalising devices with the installer code.
- Configuration of equipment parameters such as forbidding the radio and manual programming of devices.

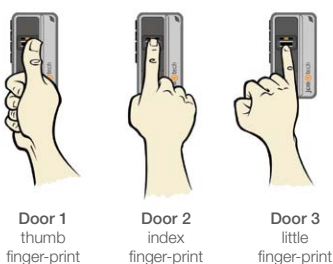
Flexibility and speed when programming equipment

- The transmitters and proximity equipment are programmed by radio without mechanical contact.
- The transmitter must be registered in the receiver like any other control.

TRANSMITTERS	ACCESSORIES	RECEIVERS
 <p>GOBio</p> <ul style="list-style-type: none"> • 868 MHz, 4-channel programmable biometric transmitter. • Nominal range: 100 m. • Memory: 10 prints. • Power supply: AAA-type 1.5Vdc lithium battery. • Consumption: 200 mA • Battery lasts for approximately 1.5 years. • Light and acoustic operating indicator for low battery, signal transmission and programming. • PC Plastic box. • High security rolling code, 19 trillion combinations. • Laser-marked series number. • Operating temperature: -20°C to +55°C • Size: 76 x 41 x 15 mm. 	 <p>Tag holder for car dashboards.</p>	<p>Receivers MOTION.</p> <p>BASE WAVE STICK CONNECT ACCESS500 ACCESS1000 and control panels with built-in receivers</p>

Activation mode A

Ideal use while in vehicle.
It allows you to activate different channels by programming each finger-print to a channel.



Activation mode B

Ideal use for pedestrians.
It allows you to activate a channel by pressing on any button and then passing the finger-print through the reader to authorize the transmission. While on this mode, it is possible to use one finger-print for all channels.

