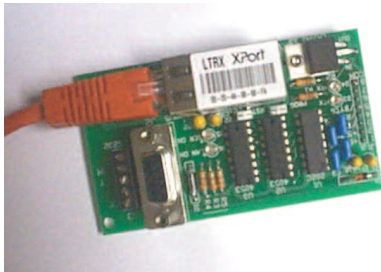


# Network Interface Card 2 For CAT and all TEC series

# NIC2



## SES Network Interface and Com Port Re-Director

The SES Network Interface (NIC2) is used to provide a Programming and Data connection to a SES CAT or TEC Telephone Access Controller by connecting to a local area network. The serial interface is pre-set to 9600 baud, 8 bits, no parity, 1 stop bit. All elements of the connection must operate at the same speed and connectivity settings.

Each NIC2 is provided with a unique hardware MAC address. The network system administrator provides an IP address that is assigned to the unique hardware address. Each SES NIC2 is then assigned a unique IP address on the network, as provided by a network administrator.

Communications with SES Selcom Secured or TECBasic software is accomplished through use of a Com Port Redirector. This takes the serial communications from the SES product and translates the signals into the appropriate TCP/IP protocol signals for transmission over a network.

An unused serial port number is chosen in the Com Port Redirector manager software (supplied by Lantronix) and assigned to the IP address of the SES NIC2 that was provided by the network administrator. The actual address(es) used should be cleared by and approved by the network system administrator. The redirected serial Com Port value (Com 6, Com 14, etc) is then selected in the Selcom Software for that SES CAT or TEC unit.

These instructions assume a previous working knowledge of the SES CAT or TEC Telephone Access Controllers and the Selcom Software. Refer to the appropriate manuals for additional information.

The CD provided with the SES Network Interface includes the following materials:

- A copy of Adobe Reader that can be used to read the manual.
- Other SES information in Adobe .pdf format. (Including this instruction sheet.)
- A copy of the Lantronix Com Port Re-Director configuring software.
- A copy of the Lantronix instruction manual in Adobe 'pdf' format.

These may also be obtained from the Lantronix web site at:  
[http://www.lantronix.com/ftp/cpr/4.1.0.1/CprDotNetDL4.1.0.1\\_Web.exe](http://www.lantronix.com/ftp/cpr/4.1.0.1/CprDotNetDL4.1.0.1_Web.exe)  
[http://www.lantronix.com/ftp/cpr/4.1.0.1/CprDotNetDL4.1.0.1\\_Web.exe](http://www.lantronix.com/ftp/cpr/4.1.0.1/CprDotNetDL4.1.0.1_Web.exe)

## Installation and Setup of SES Network Interface

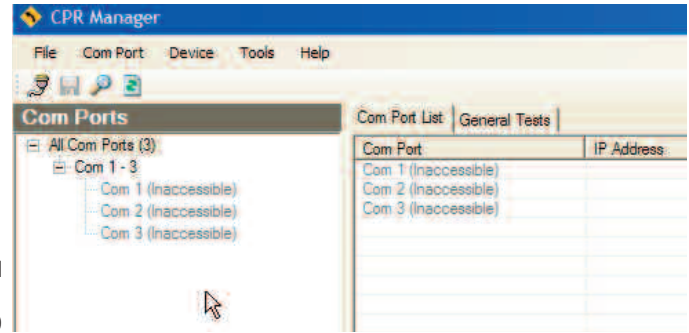
The SES Network Interface Card installs easily into your network.

Perform the following easy steps to connect the unit to your network.

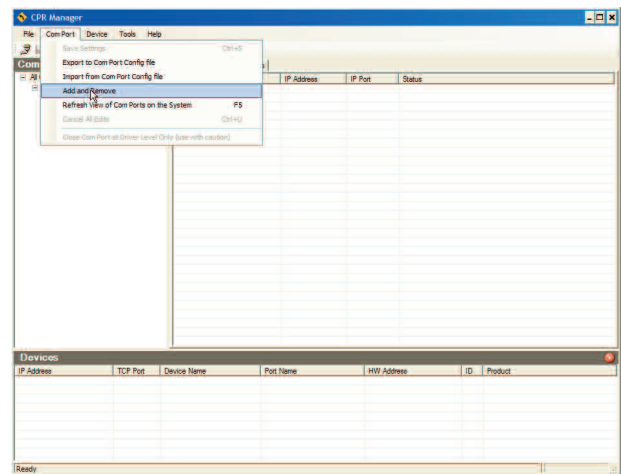
- 1) Note the hardware ID (MAC) number on the XPort module or on the SES Network Interface Card. (Example: 00-20-4A-72-28-D8). The default IP address is (0.0.0.0).
- 2) Ensure that the CAT or TEC unit is programmed to 9600 baud. Using menu 4.2 and select 5 on a CAT/TEC Unit. (Factory Default is 9600 baud).
- 3) Shut off power to the CAT/TEC Unit
- 4) Remove the standard serial interface, if installed
- 5) Install the NIC2 network interface board and restore power.
- 6) Install your network cable to the network interface board and your network. The network interface board has the standard indicator light to indicate current flow and traffic. They should light now.
- 7) Have your network administrator check the DHCP Server control panel in the Windows Server and observe or install the new device by it's identifier. A DHCP server will assign an IP address to the SES Network Interface Card, or your network administrator will assign an IP address (Example – 192.166.1.127) to the device. The SES Network Interface Card will identify itself as 'XXXXXX' with the x's are the last 6 digits of the Hardware ID (MAC) (Example – 00-20-49-72-28-D8) code (MAC). Obtain the 'Gateway address' for your network as well.

If your network is not using DHCP server your network administrator can communicate with the SES Network Interface Card at default IP 0.0.0.0)

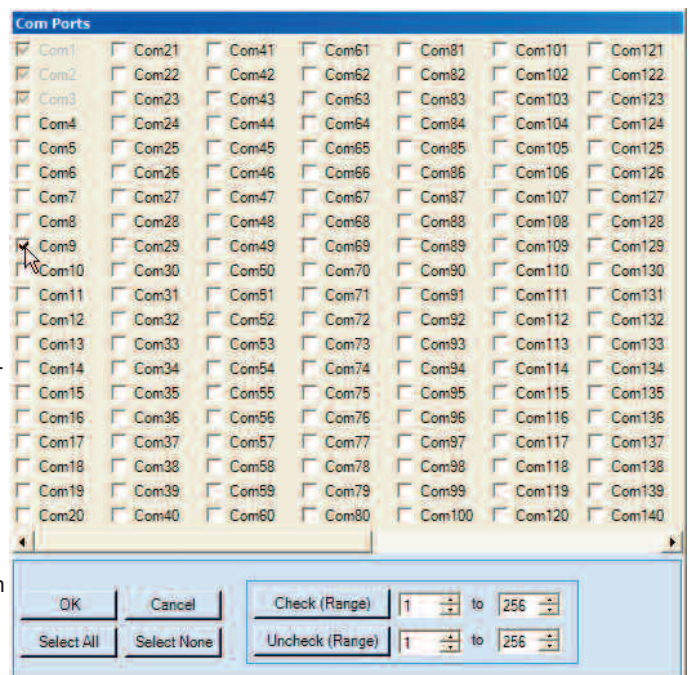
## Installing the Com Port Redirector

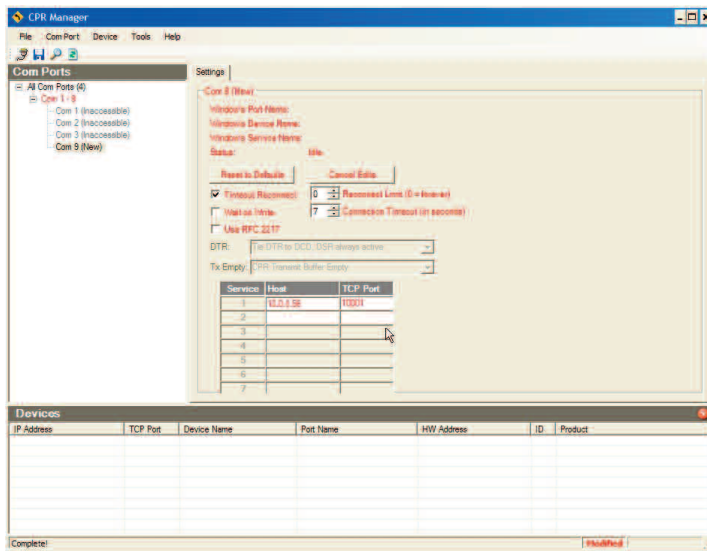


Obtain the Comport redirector software from the web or locate the file on the provided CD. Execute the "CprDotNetDL4.1.0.1\_Web.exe" to install the software. Follow the setup instructions to install the Lantronix Comport redirector.



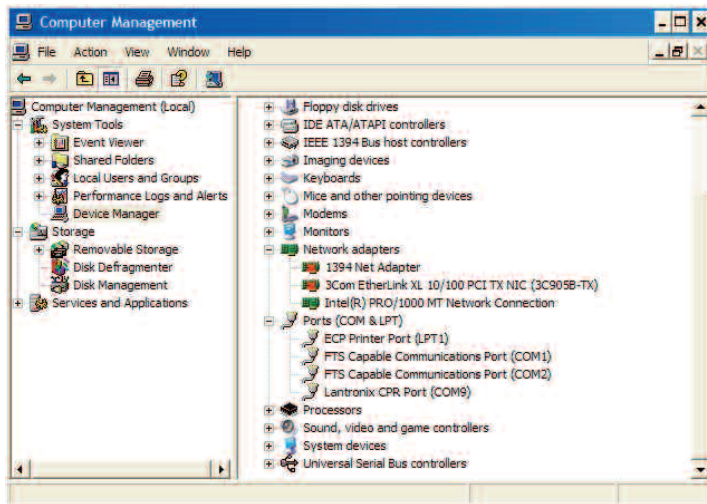
- Select the "Com Port button on the Main Screen menu bar.
- Select Com Port from the menu bar and then select the "Add and Remove" function from the drop-down menu. It will open the Com Port selector screen.
- Select a Com port. It may be any Com Port between 1 and 99. (The maximum that Selcom Secured supports.)





- Key in the IP address you obtained from the IP Port Scanner. This example happens to be 10.0.0.56.
- Then key in TCP Port 10001 (the factory default). No other value is allowed.
- Next, click on the SAVE diskette icon to store the configuration data in the NIC2.

Once configured, there is no further need for the Com Port Redirector Manager. It creates a virtual Com Port which can be observed in the Device Manager screen of the host computer. Here is a typical example:



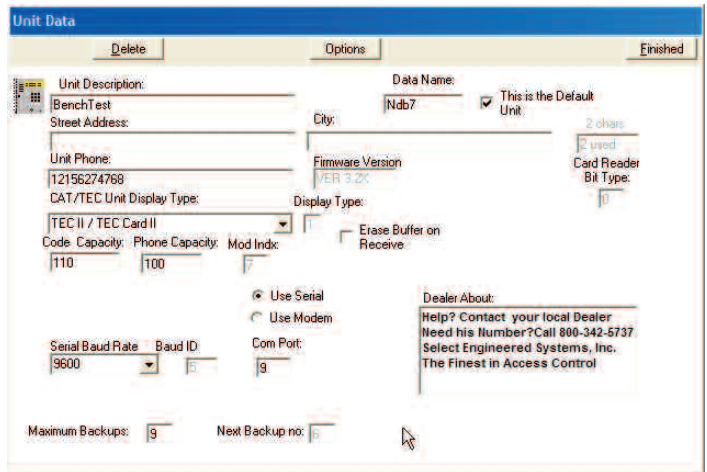
**NOTE:** SES bears no responsibility or liability regarding the use of any 3rd party software. SES can only provide support for Selcom Secured software. For any questions or support regarding any 3rd party software, contact the manufacturer of that software directly.

### Setting Selcom Secured.

Selcom Secured allows setting Com Ports 1 to 99.

To set and test a connection in Selcom, proceed as follows:

- Use a Site that you have created for the CAT or TEC unit using the SES NIC2 Network Interface Card
- Select the Menu Selection 'File' - then - 'Edit CAT/TEC Unit Data'.
- On the Unit Data Screen, Select a Baud rate of 9600 and a Com Port to exactly match the number you selected in the Comport Redirector.



- Select 'Finished' on the Unit Data Screen.
- Reselect the Unit on the Main Screen.
- Selcom Secured is ready to communicate through the NIC2 network interface card in the normal manner.

The NIC2 has an on-board serial port that normally passes through any signals going to or from the CAT or TEC unit's serial port. An example would be a logging output to a serial printer. Any time programming over a network is desired, the serial function is automatically disabled when the network communications session begins and reverts back automatically, when the network communications session ends.

You **cannot** use serial and ethernet connections at the same time. To use the serial port, plug a DB-9 male plug into the DB-9 female receptacle, or wire the appropriate signals to the supplied connector. You may use the connector or the terminal connections; but not both at the same time.



**Select  
Engineered  
Systems, Inc.**